

NOTE
COSMETIQUE



MAKE-UP CATALOGUE



Note Cosmetique is a global beauty brand which was launched in 2014 with the expertise of international professionals to make our consumers all around the world to feel good and confident in expressing their own unique beauty.

As a global brand, we feature a full make-up range over 600 Sku's, with the goal of catering to a wide range of skin types and tones. We have the same passion for quality and safety to offer you the best. Therefore, we apply high quality standards covering full control&checks on every step of product development process, from sourcing of raw material and packaging to production and storage at our factory. All our products are dermatologically and ophthalmologically tested, GMP, ISO, HALAL, PETA cruelty-free certified and registered according to EU standards.

We believe that all ages, all genders, all cultures have their own unique beauty. We want our consumers to embrace their own beauty and notice all beauties surrounding them.

Note is the beauty, NOTE that beauty.





FACE

Foundation, Concealer,
Powder, Blusher, Highlighter

HIGH
COVERAGE

MEDIUM
TO HIGH
COVERAGE

SHEER TO
MEDIUM
COVERAGE

VELVETY
MATTE
FINISH



Luminous Silk
Cream Powder

Anti-Blemish
BB Cream



Mattifying
Extreme Wear
Foundation



BB Cream



Detox & Protect
Foundation



Mineral
Foundation



Invisible
Perfection
Foundation



Sunglow
Foundation



Luminous
Moisturizing
Foundation

SEMI MATTE
SATIN FINISH

SHINY
FINISH

INVISIBLE PERFECTION FOUNDATION

The fluid formula with a light buildable veil of coverage becomes a second velvety skin, enhancing and boosting its natural glow. Infused with a humectant agent that helps to keep skin's natural moisturization and to reduce the visibility of fine wrinkles and skin imperfections. Ensures clean and controlled application thanks to its squeezable dropper system.

Enriched with
Blueberry oil.

WARM



100
Bare Sand

130
Nude Bisque

140
Soft Linen

170
Warm Bisque

180
Warm Sand



190
Nude Caramel

200
Golden Honey

210
Intense Toffee

NEUTRAL



110
Fair Ivory

150
Pale Linen

COOL



120
Natural Ivory

160
Smooth
Cashmere

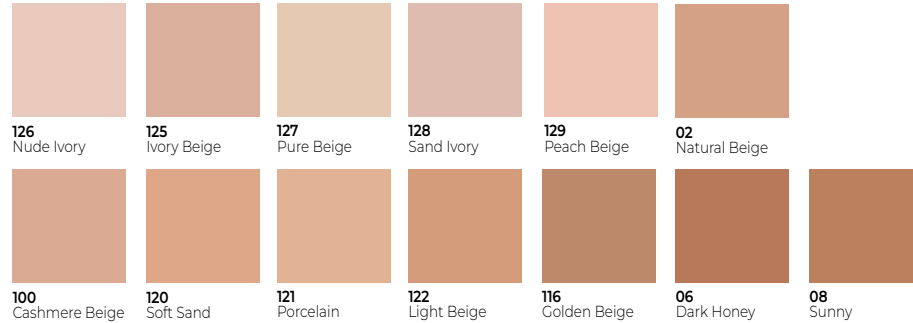


MATTIFYING EXTREME WEAR FOUNDATION

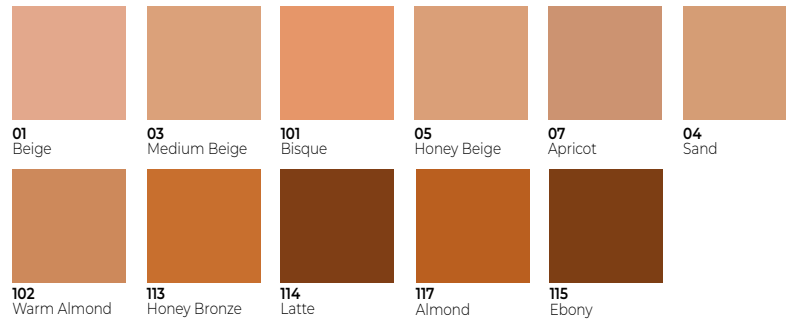
Velvety matte finish foundation with medium to buildable high coverage to conceal imperfections and control shine. Helps to reduce the appearance of pores and excess sebum. Suitable for all skin types, perfect for oily skin.

Enriched with
Cedarwood oil, SPF 15

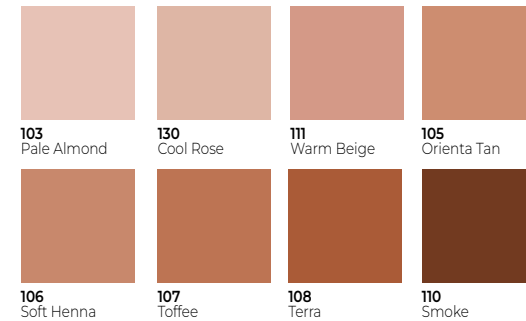
NEUTRAL



WARM



COOL



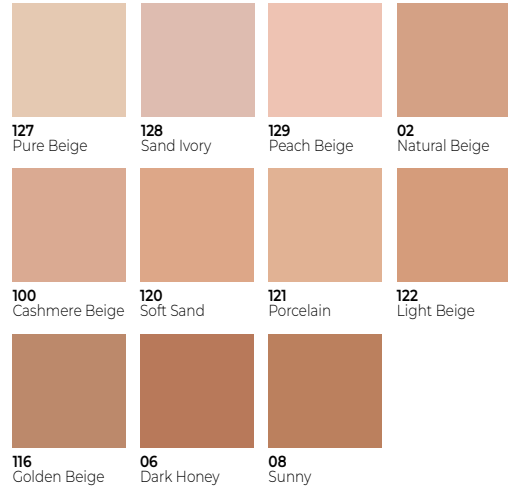
DETOX & PROTECT FOUNDATION

An antioxidant-infused foundation to shield skin from harmful environmental aggressors. Effective solution to refresh a dull, stressed, and tired complexion. Medium to high coverage with satin finish. Suitable for all skin types.

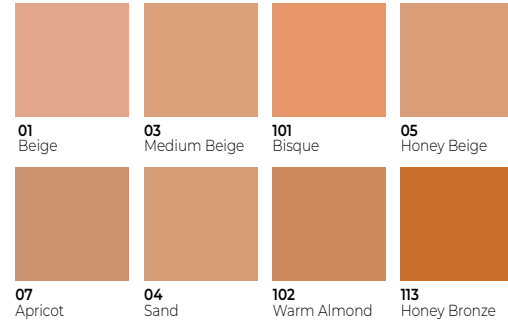
Enriched with

Yeast extract, Sweet Almond Oil, Vitamin E, SPF 15

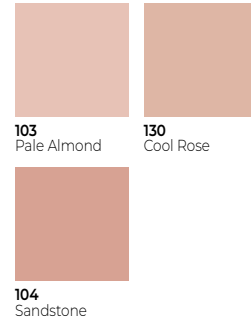
NEUTRAL



WARM



COOL



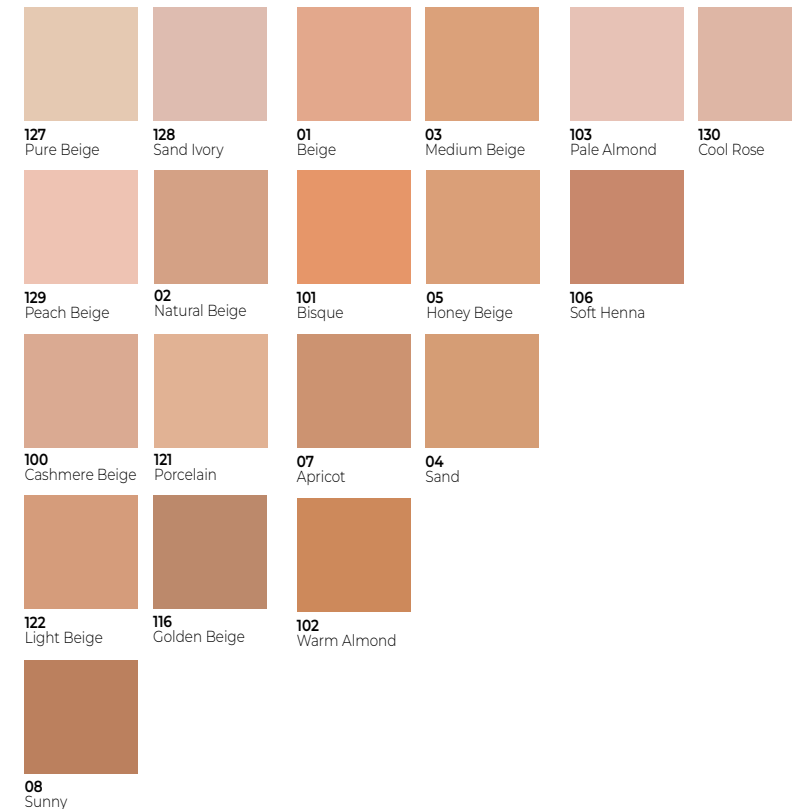
LUMINOUS MOISTURIZING FOUNDATION

A silky soft medium coverage foundation that perfectly evens out the complexion, creating a healthy and radiant looking skin. Helps to soothe and moisturize skin. Suitable for all skin types, ideal for dry and dull looking skin.

Enriched with

Macadamia Nut Seed Oil, Sweet Almond Oil, SPF 15

NEUTRAL



MINERAL FOUNDATION

Non-comedogenic, lightweight satiny finish formula with medium to high coverage with SPF 15. Infused with high concentration of minerals to activate cell generation and to achieve perfect looking complexion. Suitable for all skin types.

Enriched with

Coral Seaweed Extract, Corallina Officinalis Extract, Vitamin E



401 402 403 404 501



SUNGLOW FOUNDATION

Lightweight silky texture with sheer to medium coverage to warm up the face with a radiant sun-kissed effect with SPF 15. Suitable for all skin types.

Enriched with Vitamin E



10 20 30

LUMINOUS SILK CREAM POWDER

A creamy powder foundation with a high concealing feature for a long-lasting, flawless, velvet-like matte finish. Easy blendable formula that keeps skin looking fresh and shine-free for hours. Suitable for all skin types.

Enriched with

Cedar Wood Oil, Vitamin E



01 Beige 02 Natural Beige 03 Medium Beige 04 Sand 05 Honey Beige 06 Dark Honey

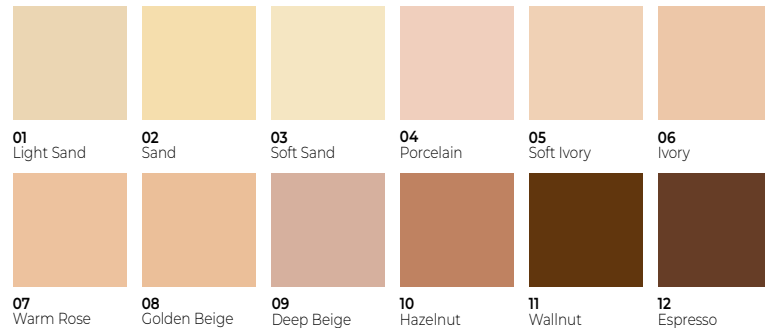




CONCEAL & PROTECT LIQUID CONCEALER

High coverage, lightweight and silky texture covers and corrects any sort of imperfections with natural radiant look. Hydrates and comforts skin while protecting from Blue Light with unique combination of caring ingredients. Suitable for all skin types.

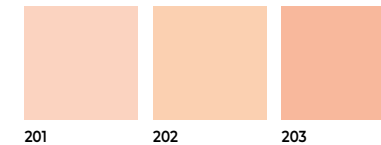
Enriched with
Carotolino™, Saccharide Isomerate



MINERAL CONCEALER

A smooth, blendable cream-to-powder concealer to brighten the under eye area and effectively camouflage imperfections, dark circles, fine lines. Promotes cell regeneration with Coral Seaweed Extract and soothes under eye area with cooling metal tip. Suitable for all skin types.

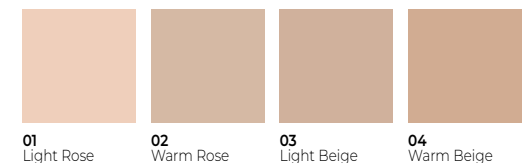
Enriched with
Coral Seaweed Extract, Corallina Officinalis Extract, Vitamin E



PERFECTING PEN

A handy, all-in-one eraser, brightener and corrector that perfects the complexion while concealing skin imperfections for an instantly smoothed, refreshed and radiant look. Suitable for all skin types.

Enriched with
Vitamin E



SKIN PERFECTING ILLUMINATOR

Skin perfecting make-up base provides a healthy glowing effect with its soft silky, non-greasy texture adding a natural, vibrant glow to the finish of various foundations. Suitable for all skin types. Ideal for dry skin.



SKIN PERFECTING PRIMER

A lightweight, non-greasy primer to blur imperfections, diminish the look of pores and control shine giving the complexion a long-lasting smooth and matte appearance. Suitable for all skin types. Ideal for oily and combination skin.

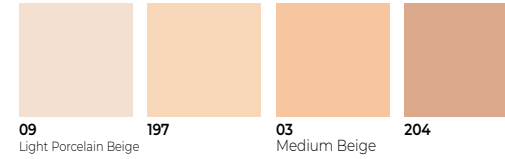
LUMINOUS SILK COMPACT POWDER

A weightless pressed powder that instantly evens out and smoothes the complexion, perfecting the skin with a soft-matte finish that looks luminous in any source of light. Suitable for all skin types.

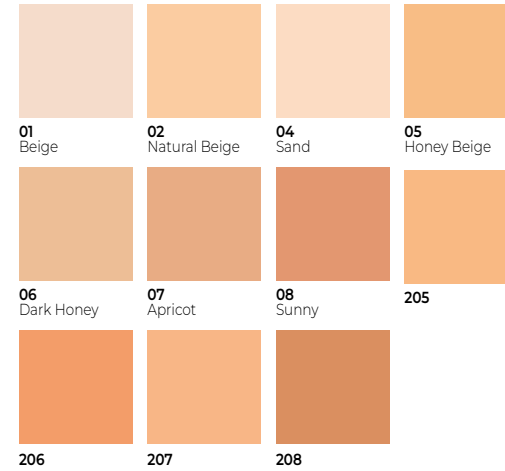
Enriched with Argan Oil



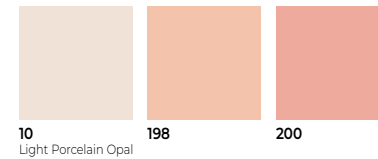
NEUTRAL



WARM



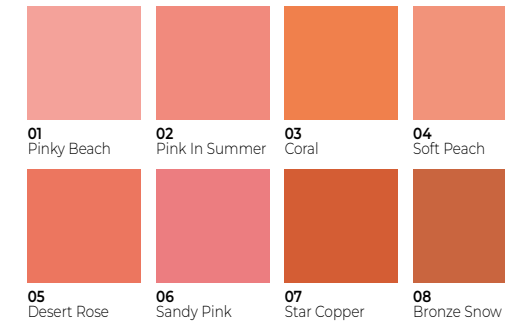
COOL



LUMINOUS SILK COMPACT BLUSHER

A soft, silky powder blush that enhances the complexion with a touch of color and delicate, natural radiance. An ultra-fine, easy blendable texture with even and color-true buildable coverage. Suitable for all skin types.

Enriched with Argan Oil, Vitamin E

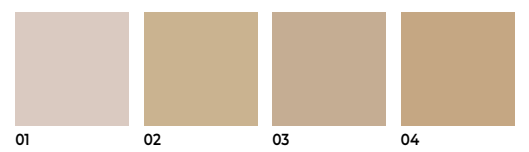




MINERAL POWDER

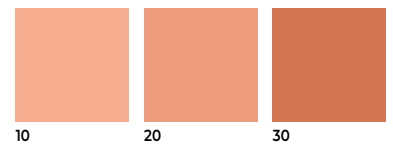
A lightweight, ultrafine powder for skin perfection with a sheer, luminous effect. Infused with high concentration of minerals to activate cell generation and to achieve more healthy look. Suitable for all skin types.

Enriched with
Coral Seaweed Extract, Corallina Officinalis Extract, Vitamin E



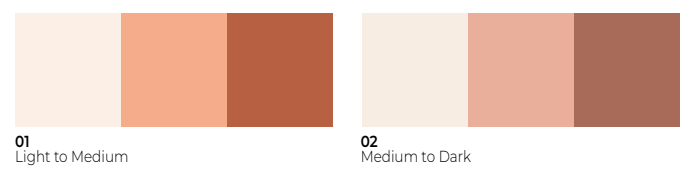
BRONZING POWDER

A silky soft powder to deliver natural-looking warmth. Skin perfecter that captures light for the most natural sun-kissed glow. Suitable for face and body makeup and all skin types.



PERFECTING CONTOURING POWDER PALETTE

An easy-to-use face contour palette to effortlessly sculpt and define the face. Loaded with contouring, sun-kissed bronzing and highlighting powders to shape and enhance facial features. Suitable for all skin types.



BAKED POWDER

Baked powder with a unique, airy texture gives an ideal glow and natural radiance to the skin. Wet or dry application perfectly melts into skin with a soft, flawless finish. Suitable for all skin types.

Enriched with
Macadamia Nut Oil



01 Stardust 02 Honey Warm 03 Caramel Cake 04 Porcelain Ivory 05 Soft Beige 06 Gold Bronze



BAKED BLUSHER

A lightweight, super-soft baked blusher that perfectly melts into skin and gives a warm illumination to the cheeks. Wet and dry application features allow to achieve a customized coverage.

Enriches with
Macadamia Nut Oil



01 Pleasure 02 Vintage Pink 03 Oriental Pink 04 Deeply Bronze 05 Mocha Taste 06 Hot Rose

DROP HIGHLIGHTER

A liquid face highlighter that illuminates the complexion for an immediate radiance. A lightweight, soft, non-greasy texture with a seamless blendability on skin. Mix with foundation for a customizable and buildable glow. Suitable for all skin types.



01 Pearl Rose

02 Charming Desert



BAKED HIGHLIGHTER

An ultra-fine, super silky baked illuminator that instantly highlights the complexion with pearlescent sparkle. Wet usage for a seductive, dewy finish. Dry application for a subtle, luminous look. Suitable for all skin types.

Enriched With
Macadamia Nut Oil



01 Moonlight

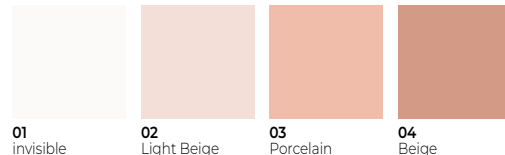
02 Sun Kiss





LOOSE POWDER

An ultra-lightweight, perfecting face powder to set makeup with a long-lasting matte finish that smoothes the skin for an even complexion, minimizes the appearance of pores and controls shine throughout the day. Suitable for all skin types.



TRANSLUCENT SETTING POWDER

A sheer setting powder to lock makeup in place enhancing the complexion with a lightweight matte finish. An effective shield to reduce blue light-induced skin damage. Suitable for all skin types.

Enriched with
Carotolino™, Hemp Seed Oil



BANANA SETTING POWDER

A sheer, ultra-fine, yellow-toned face powder that has been developed to set makeup for longer wear while warming up skin tone. It reduces blue light-induced skin damage and support a healthy and vivid skin color. Suitable for all skin types.

Enriched With
Carotolino™





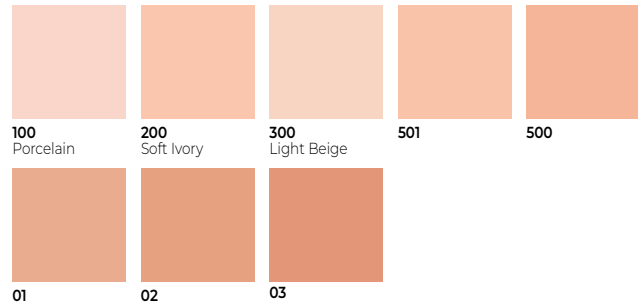
BB SERIES

BB Cream, Concealer,
Lip Corrector

BB CREAM

The lightweight, comfortable texture unites a high, breathable coverage with SPF 15 protection enhances the complexion for even skintone and helps moisturize healthy looking skin. Suitable for all skin types.

Enriched with
Wheat germ, Citrus fruit extracts, Vitamin E



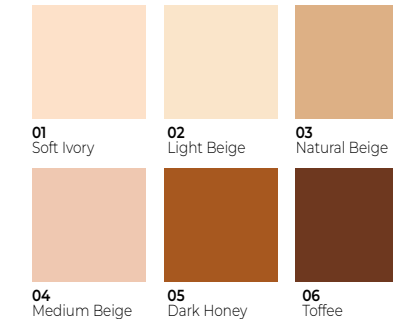
ANTI-BLEMISH BB CREAM

Non- Comedogenic high coverage formula with velvety matte finish and SPF 15 that has been specially developed for oily and acne prone skin. Skin perfecting cream infused with Hygeaphos® A.S. to reduce skin oiliness up to %81 and Carotolino for Blue Light protection.

Enriched with
Hygeaphos® A.S., Carotolino™, Vitamin E



*Test results on 23 volunteers after 28 days regular use.





BB CONCEALER

Buildable silky-smooth formula with SPF 15 diminishes the appearance of dark circles and fine lines. The metal cooling tip massages and soothes the delicate under eye for a more radiant look. Suitable for all skin types.

Enriched with

Wheat Germ Extract, Citrus Fruit Extracts, Vitamin E

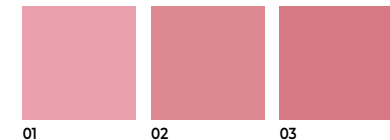


BB LIP CORRECTOR

The smooth liquid, comfortable formula revitalizes and moisturize and enhances the lips with a tint of light, pink color giving a volume-enhancing, shiny effect. Comfortable application with a smooth cushion tip.

Enriched with

Cocoa Butter, Vitamin E



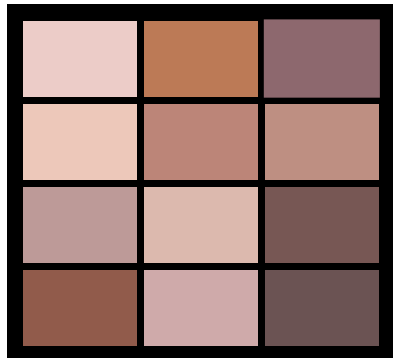


EYES

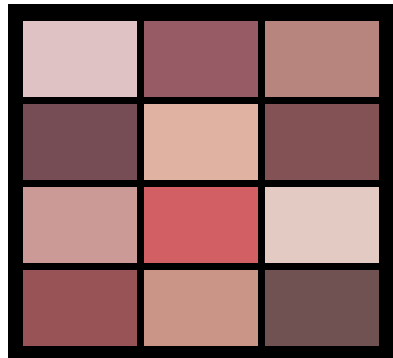
Eyeshadow, Mascara, Liner,
Pencil, Brow

LOVE AT FIRST SIGHT EYESHADOW PALETTE

An essential eyeshadow palette featuring 12 full-pigment shades for creating endless eyeshadow looks, from subtle to dramatic pops of color. Suitable to use wet for better color payoff control.



201
Daily Routine



202
Instant Lovers



203
Freedom to Be



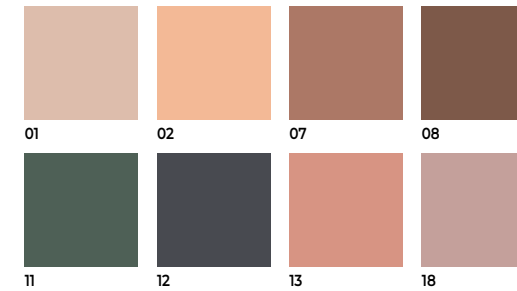
PROFESSIONAL EYESHADOW PALETTE

A collection of extra pigmented, silky and multi-finished shades. A variety of effects from matte, satin velvety to glitter and shiny. Ultra-sensorial, easy-to-blend formula is suitable for wet and dry application.



LUMINOUS SILK MONO EYESHADOW

A longwearing, highly pigmented eyeshadow for an easy, comfortable application with soft and intense color payoff, a lightweight feeling and soft matte and pearly finish options.



SILICONE BRUSH

- VOLUME
- LENGTH
- EXTRA BLACK



ULTRA VOLUME MASCARA

- VOLUME
- DEFINITION
- EXTRA BLACK



LASH ID MASCARA

- VOLUME
- CURL
- EXTRA BLACK

- LENGTH
- VOLUME
- DEFINITION
- EXTRA BLACK

- ALL IN ONE
- WATERPROOF

- ALL IN ONE

- VOLUME
- CURL
- LENGTH
- EXTRA BLACK

- VOLUME
- LIFTING
- LENGTH
- DEEP BLACK

- VOLUME
- LENGTH
- SEPARATION



SCULPT MASTER MASCARA (02)



SCULPT MASTER MASCARA (01)

FIBER BRUSH



REAL LOOK MASCARA



VOLUME ACT MASCARA



LASH MASTER MASCARA



PERFECT LASH MASCARA



VOLUME ONE TOUCH WATERPROOF MASCARA



VOLUME ONE TOUCH MASCARA



LASH CODE MASCARA



FULL BLOOM MASCARA

VOLUME ONE TOUCH MASCARA

Experience fabulous eyes with extra volumized and multiplied lashes in just one coat. Buildable formula and hourglass-shaped fiber brush effortlessly thicken, lengthen and curl any type of lashes.

Enriched with
Castor Oil, Green Tea Extract, Vitamin E



VOLUME ONE TOUCH WATERPROOF MASCARA

Experience fabulous eyes with extra volumized and multiplied lashes in just one coat. Buildable, **waterproof** formula and hourglass-shaped fiber brush effortlessly thicken, lengthen and curl any type of lashes.



REAL LOOK MASCARA

A mascara to achieve bigger, bolder lashes along with a deep, black color. A combination of an ultra-creamy formula and a big-sized fiber brush to amplify, thicken and lengthen lashes for a volumised, fanned-out effect.

Enriched with
Vitamin E





VOLUME ACT MASCARA

Volume and definition-enhancing mascara. An ultra-creamy formula and fiber brush to ensure maximum definition and voluminous, fuller lashes.

SCULPT MASTER MASCARA

Triple performance mascara with a lengthening, volumizing and curling effect. A silicone oblique brush to perfectly sculpt, curl and separate eyelashes for an elegant fan effect, exceptional definition and fuller-looking lashes. Black and extra black options.

Enriched with
Panthenol, Vitamin E



LASH CODE MASCARA

Fiber-filled creamy texture and a specially designed, curved fiber brush wrap the lashes ensuring an instant volume-enhancing and lifting effect with a spectacular definition.

LASH MASTER MASCARA

Volume-creating and curl-sculpting mascara. An extra deep black formula features a curved fiber brush to style every lash for amazing curl, thickness and noticeably denser lashes.





ULTRA VOLUME MASCARA

A mascara to emphasize the lashes with an extra deep black formula. A gigantic molded silicone brush to deliver extending length, perfectly separate and curled lashes ensuring massive volume.

Enriched with
Sweet Almond Oil, Vitamin E

LASH ID MASCARA

The synergy of a silicone, jumbo sized mascara brush and creamy, full-bodied texture allows to deliver a perfect amount of formula for a spreadable flawless application ensuring a great volume effect with lash-by-lash definition.



BOOSTING LASH PRIMER

An excellent conditioning base for mascara to have improved volumizing and lengthening effect while taking care of the lashes with active components that accelerates lash growth. Total packaging contains %78 sustainable materials.

FULL BLOOM LASH MASCARA

Formulated with **vegan** and 90% naturally derived ingredients combines with classic conical shaped fiber brush that gives perfect separation and fantastic fanned out look. Total packaging contains 79% sustainable material.





ELEGANT MATTE DIPLINER

A liquid liner that delivers a beautiful, matte, elegant finish that stays perfectly for hours and on every occasion. A high color intensity that is water-, transfer-, sweat-, smudge proof.



01
Coal Black



02
Coffee Brown



03
Navy Blue



04
Ocean Green





ULTRA BLACK EYELINER

An ultra-fine liner for long-lasting, extra-black lines. A thin-tipped brush for seamless application of the smoothest, finest lines. Fast drying, buildable formula.

ULTRA BLACK DIPLINER

An ultra-fine felt-tip liquid liner that allows for easy, precise application in a single stroke. Quick drying, long-lasting, full-pigment, true black formula.

Enriched with
Sweet Almond Oil, Vitamin E



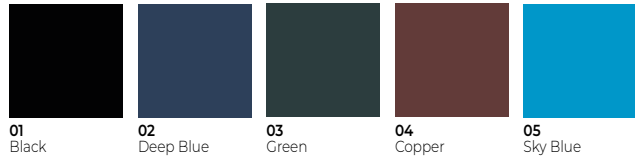
PRECISION EYELINER

An easy-to-use, felt-tip eyeliner pen to create sharp, more accurate lines and wings. A water-based, quick drying, ultra-black pigment formula with a silky matte finish that is smudge-proof, transfer-proof and sweat-proof.



SMOKEY EYE PENCIL

A double-ended pencil for perfectly soft, blended lines with extra-long wear. Excellent color payoff. Smudge-resistant, waterproof formula.

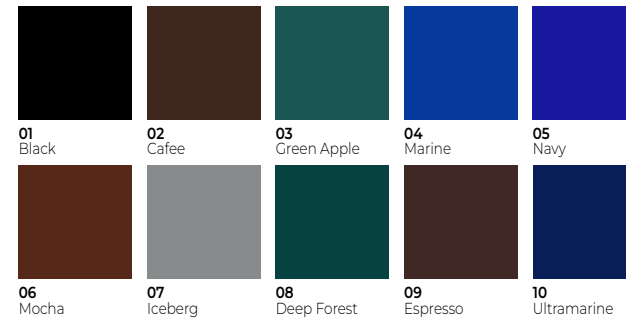


INTENSE LOOK EYE PENCIL

Automatic pencil featuring a fine tip that offers intensely black color with a matte finish. Waterproof formula, maximum precision, flawless and smooth application without skipping for a soft line that lasts all day.

ULTRA RICH COLOR EYE PENCIL

A sharpenable wooden pencil eyeliner to line, define and shade eyes with a rich color and a smooth, semi-matte finish. Waterproof, ultra-pigmented formula that is also perfect for use as kohl kajal to add intensity to any eye makeup look.



BROW MASTER WAX

An easy-to use brow fixing wax that combs, styles and sculpts every brow hair with a long-lasting clear gel. It instantly gives brows a lifted, modern appearance while providing extreme hold.



MOISTURIZING LASH & BROW OIL

A moisturizing oil that offers an amazing caring property both for brows and lashes by making them brighter, fuller and stronger.

Enriched with
Avocado Oil



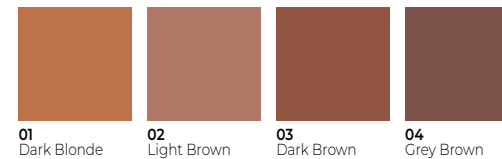
NATURAL LOOK EYEBROW PENCIL

A dual-sided, long wearing wooden brow pencil to accurately fill in the eyebrows and provide a perfect shape for a full expression. Waterproof formula.



BROW ADDICT TINT & SHAPING GEL

A two-in one long-wear product for perfectly shaped brows. One side fills the brows with a high-pigmented, waterproof tinted cream while the other combs, styles and sets the brows with non-sticky gel.





LIPS

Lipstick, Lipgloss, Lip Cream,
Lip-Ink, Lip Liner

LIPSTICK
SOLID TEXTURE

LIPSTICK
LIQUID TEXTURE

LIP GLOSS

MATTE FINISH



Mattemoist
Lipstick



Mattever
Lip-Ink

SEMI MATTE /
SATIN FINISH



Mattever
Lipstick



Mineral Matte
Lip Cream



Mattemoist
Lipgloss

SHINY FINISH



Deep Impact
Lipstick

GLOSSY FINISH



Le Volume
Lipgloss



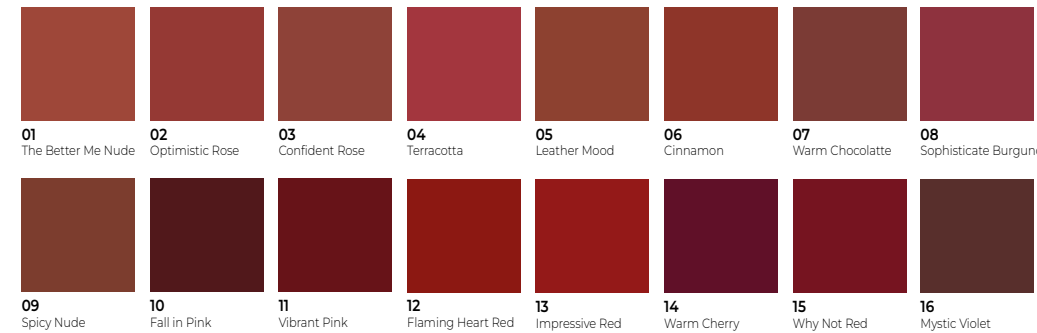
BB Lip
Corrector



DEEP IMPACT LIPSTICK

Ultra-creamy lipstick in bold colors with a radiant finish. Perfectly intense coverage in just one stroke.

Enriched with
Vitamin E





MATTEVER LIPSTICK

Rich, elegant, kiss-proof lipstick for intense, long wearing color with a soft, satin-matte finish. A lightweight, smooth creamy, non-drying formula with sensually soft, luxuriously comfortable wearability.

Enriched with
Moroccan Argan Oil, Vitamin E

01 Chocolate Mood	02 Spring Dress	03 Ethereal	04 Indian Curry
05 Rose Delights	06 Sunset Party	07 Whisper Talks	08 Unconventional Rose
09 First Date Rose	10 Shocking Fuschia	11 Pure Violet	12 Wine Tasting Red
13 Strawberry Envie	14 Dear Cherry	15 Favorite Pink	16 Me Grenadine
17 Dress Red	18 Heartbeat Red		



MATTEMOIST LIPSTICK

An intense velvety matte lipstick ensuring comfort for hours. A highly pigmented, soft and long-wearing formula that sets to a velvety matte finish with long lasting mouisturization for all-day comfort.

Enriched with
Macadamia Nut Seed Oil, Vitamin E

301 Spirit	302 Mirage	303 Miss Kiss	304 Spring
305 Show	306 Kissblossom	307 Dark Wine	308 Brand
309 Note Soft	310 Lingerie Nude	311 Satin Cup	312 Happy Tan
313 Soft Carmen	314 Mocha Rain	315 Hot Brown	316 Coco Toffee



MATTEVER LIP-INK

A liquid lipstick with smudge-proof, transfer-resistant formula for a velvety matte, kiss proof finish. The intense ink formula moisturizes lips and lasts up to 8 hours.

Enriched with
Murmuru Butter, Argan Oil

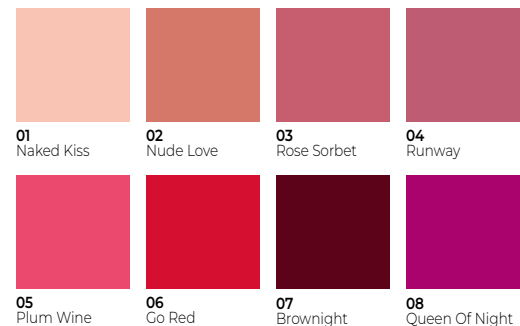




MINERAL MATTE LIP CREAM

A highly comfortable, long wear liquid lipstick with fully-covering color. A rich creamy, velvet-like texture that wears comfortably with cushion applicator and keeps lips hydrated, softened and conditioned.

Enriched with
Coral Seaweed, Vitamin E



MATTEMOIST LIPGLOSS

A full-pigment liquid lip color formula that settles into a luxurious, satin matte finish. Lightweight and nourishing formula provides long-lasting moisturization with a comfortable wearing.

Enriched with
Macadamia Nut Oil, Vitamin E





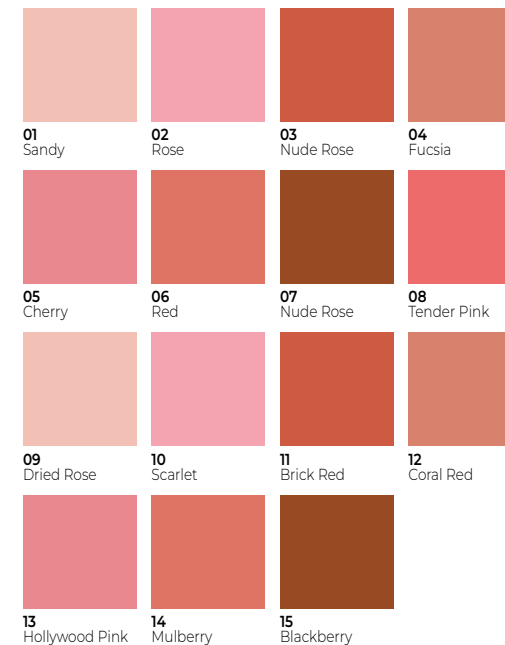
LE VOLUME PLUMP & CARE LIPGLOSS

A lip gloss with a voluptuous result for smoother, redefined, plumped lips. Non-sticky, super cushion texture with comfortable wearability and a fresh, soft feeling on the lips.



ULTRA RICH COLOR LIP PENCIL

A highly pigmented, soft, wooden lip pencil for shaping, lining or filling in the lips. Smudge-proof, long lasting formula with weightless comfort and a natural matte finish.





NAILS

Nail Enamel



FLAWLESS NAIL ENAMEL

Wide range of colors options from soft nudes to vibrant rich colors with smooth liquid texture, easy application and flawless finish.





GEL LOOK NAIL ENAMEL

Salon-look finish and gel-like shine in just one coat. An ultra-rich, gel-based formula featuring a flat wide brush for easy, rapid application and flawless, intense results.



REMOVER & ACCESSORIES



INSTANT BI-PHASE MAKE-UP REMOVER

An ultra-gentle, bi-phase formula to dissolve waterproof and long-wearing face, eyes and lip makeup. Infused with jojoba oil to soothe and refresh skin, leaving it fresh and clean with no oily sensation. Suitable for all skin types.

Enriched with
Jojoba Oil

STAY FRESH FIXING SPRAY

Dual action setting spray that fixes makeup for hours while providing an immediate radiant, revitalizing effect on the complexion. It reduces skin oxidation and protects the skin against the damaging effects of external factors.

Enriched with
Earth Marina Water



BEAUTY SPONGE

A three-sided makeup sponge with a curved top for flawless makeup application.



SILICON BLENDER

A double-sided makeup sponge in the shape of a water drop. Smooth and soft silicone surface, perfect applicator for liquid and creamy products.



DUO SHARPENER

A high-quality steel sharpener for both jumbo and regular size eye and lip pencils.



NOTE
COSMETIQUE

Amir Shadman



+ 5 8 4 1 2 3 1 6 9 1 9 4



Info@Familiagroup.net